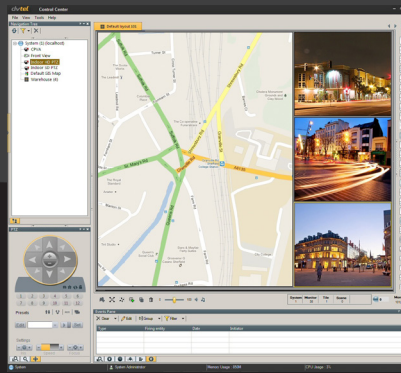


# Latitude Latitude NVMS V6.4



## Network Video Management System

### Latitude NVMS is the preferred platform for organizations that need to effectively manage video surveillance operations over IP networks.

DVTEL's award-winning Latitude NVMS® is an open-standard, network-based video management software platform that is the most powerful and versatile solution on the market today. Using the latest technology advancements of an enterprise system, Latitude is part of DVTEL's cutting edge Video Security Solution for organizations of all sizes. Designed originally as a robust, enterprise-grade video management software platform, Latitude is the core of DVTEL's advanced video security solutions. Latitude replaces antiquated CCTV matrix switches, multiplexers, and DVRs to provide the power of a cutting-edge, IP-based physical security solution. From a small business, single-server system to a distributed system managing thousands of cameras, Latitude can efficiently support any system size or architecture. Plus, installations can span multiple sites, cities and continents.

#### System Overview

Latitude NVMS is a fully scalable enterprise-level multimedia management platform that is the core of DVTEL's end-to-end video security solution. This advanced network-based system architecture enables simultaneous monitoring of video and audio, live and recorded, from multiple stations. The system is easily configured for on-site and off-site storage.

- Includes the award-winning TruWitness™, CaseBuilder Incident Reporting, and SceneTracker video stitching software
- Supports H.264, MPEG4 and MJPEG video compression
- Continuous, scheduled, manual, event-based and alarm-based video and audio recording
- Supports hundreds of IP video edge device models from leading manufacturers
- Built on Microsoft .NET Framework, Latitude offers a comprehensive .NET SDK
- State-of-the-art client applications and IT-friendly features
- Resilient system design with failover and redundancy options

#### Version 6.4 Highlights

- **Latitude is now part of DVTEL United VMS platform including Latitude, Horizon and Meridian. You can now easily monitor all your systems real-time, concurrently, remotely or locally over any type of network**
- **Tamper proof archiving – real-time watermarking ensures data security**
- **Export files via web client**
- **Increased performance that allows faster login and recovery time**
- **User-forced logout**
- **Integrates latest Immervision SDK that supports new third- party fisheye cameras**
- **Fully integrated with the newest DVTEL and ioimage edge devices**
- **ONVIF Profile S-conformance enables support for popular third-party edge devices**

- **Maximize your security**  
Offers the most advanced features and unparalleled flexibility
- **Reduce operational costs**  
Latitude collects the relevant data and provides actionable information, allowing the users to focus on what is important
- **Grows with your needs**  
Expand your network to thousands of cameras
- **Open platform = secure investment**  
Supporting ONVIF, hundreds of edge devices and third-party systems protects your investment and gives you freedom of choice
- **A Complete Solution**  
Combine Latitude NVMS with DVTEL's storage solutions and edge devices for synergistic, seamless functionality and maximum cost savings

**dv**tel® *Now you can.*

VIDEO INNOVATION TO SECURE YOUR BUSINESS

DVTEL, Quasar, are trademarks of DVTEL Inc.  
All other company names and products are trademark or registered trademarks of their respective companies.  
DVTEL reserves the right to make changes without notice.

[www.dvtel.com](http://www.dvtel.com)

# Latitude NVMS V6.4

## Network Video Management System

### System Functions

#### Video Interfaces

- IP cameras, encoders and decoders
- Standard to multi-megapixel resolutions
- All DVTEL and ioi edge devices
- Broad third-party edge device support
- ONVIF Profile S-conformance

#### Video Monitoring and Control

- Live, playback and export in one application
- PTZ, digital zoom, layouts and tours
- Privacy masking
- Remote viewing and centralized monitoring

#### Recording and Reviewing

- Flexible recording and retention options
- Scheduled and event-based recording
- Advanced search, playback and export options
- Unlimited\* cameras on multiple archivers

#### Additional Basic Features

- Full duplex audio
- I/O support (dry contacts and relays)
- Audit trail and reporting tool
- CCTV keyboard connections

#### Advanced Features

- TruWitness streaming from mobile devices
- GIS map dynamic display of alarms, cameras and TruWitness devices
- SceneTracker – panoramic video stitching application
- CaseBuilder – investigation management tool
- Mentor – capture, stream and record the operator's screen
- Virtual matrix and remote control of other workstations and video walls
- Advanced alarm management
- Interactive HTML maps and Map Builder
- Rule-based engine for managing events and automatic actions
- Digital PTZ presets
- SNMP support

\* With Latitude Enterprise

#### Users

- Unlimited\* number of users
- User management with privilege control
- Active Directory integration

#### System Features

- Distributed architecture
- Failover of central Directory service
- Failover and redundant archiving
- Secured system access via gateway server
- Virtualization support

#### SDK and interfaces

- Full set of APIs and integration tools
- Access control, LPR, PSIM, and perimeter fence detection integrations



# Latitude NVMS V6.4

## Network Video Management System

### System Components

#### Services

- Directory** – the system’s central administration and configuration database
- EventDistributor (EDB)** – intelligent rule based switching of events and actions
- Archiver** – records video, audio and meta data and manages edge devices
- Gateway** – portal for remote access over the Internet
- Transcoder** – provide remote connectivity to the system and video streaming over the Internet
- AuditTrail** – Recording of all administrator events in SQL database
- SafRun** – watchdog service
- CaseBuilder** – provides case management services
- Application server** – required for hosting add-ons, plugins and integrations

#### Client Applications

- ControlCenter** – the operator’s command and control interface and a player for live, archived and exported multimedia and case management
- AdminCenter** – the system configuration interface
- QuickControl Center** – allows you to connect to your Latitude system with no installation required, and serves as a portable stand alone player
- Client Portal** – provides users with easy access to download and install client applications
- Thin Web Client** – access to live, archive and PTZ video from Internet Explorer and Firefox\* (\*live only)
- Mobile Clients** – viewing applications for iPad, iPhone and Android devices
- Mentor** – capture the operator’s screen as a video stream, allowing the supervisor to record or monitor it in real time for training and review

#### Directory

- Authentication management
- System configuration and settings catalog
- Alarm management
- Incident/metadata management
- System status view
- Using Microsoft SQL Server database
- Fail over directory—multiple per system

#### Event Distributor (EDB)

- Intelligent, rule-based distribution of events, actions and messages
- Supports Failover EDB
- Using Microsoft SQL Server database
- Recording of all the event types that were selected by the administrator for logging, into an AuditTrail database

#### Archiver

- Recording of video and audio
- With dual stream encoder, either stream can be recorded
- Playback of video and audio
- Manages IP Cameras, Encoders, Decoders and other IP Edge Devices
- Audio/Video - Multicast or Unicast capability
- Controls PTZ domes and sequences
- Video proxy (redirection)
- Performs motion detection events
- Using Microsoft SQL Server database to store metadata including storage management, bookmarks and motion information
- Support for redundant recording
- Supports Failover archiving
- Automatic discovery of IP edge devices
- Performs background export and mass export

#### Transcoder and Gateway

- The Transcoder adjusts video stream bandwidth to enable video monitoring over limited bandwidth connections
- The Gateway acts as a safe entry point for outside communications
- The Transcoder can interface with common media streaming solution for web publishing

#### ControlCenter

- View live, archived and exported video and audio, side-by-side
- Synchronized playback
- Advanced Workspace Mode control
- CaseBuilder mode
- Advanced video overlay controls to maximize the video real estate
- Sophisticated alarm and event management
- Manage incidents and bookmarks
- Global client – connect to multiple systems
- Remote client – connect via the Internet
- Logical tree view with entity status
- Embedded SceneTracker
- Maps and web content in tiles
- Flexible/customizable GUI layout
- PTZ, Digital PTZ and keyboard support
- Automatic updates of new versions

#### AdminCenter

- Configuration and administration
- Licensing interface
- Ease of use through wizards: Quick Configuration wizard, Camera wizard, Copy Configuration wizard and user group wizard
- Dashboard display of system status
- Sidebar menu offering task oriented user interface
- Automatic discovery of edge devices
- Physical tree – servers and edge devices configuration
- Logical tree – geographical/organizational hierarchy configuration
- Filtered views for cameras, users and more
- Search/Filter support for all trees
- Profiles and schedules
- Users, user groups and privileges
- Alarm, event and action definitions
- Global client – connect to multiple systems
- Remote client – connect via the Internet
- Map Builder – A user interface for creation of HTML-based maps
- Ability to backup system databases
- Mass export and background export interface
- Automatic updates of new versions

#### TruWitness™

- Turns an Android or iOS handheld device into a mobile IP camera
- A TruWitness device allows the user to trigger alarms, transmit his location, and stream video to the center
- Easily initiate and receive phone calls from the center while using TruWitness

#### SDK

- Provides a Latitude API that can be used for integrations and customizations
- Provides video feeds using the Direct Show filter
- Provides event and alarm listeners to the system using the Event API and Alarm API
- Productized and documented

# Latitude NVMS V6.4

## Network Video Management System

### System Requirements\*

#### Server-Side Requirements

	Minimum	Recommended
Operating System	Windows 7 Professional, 32-bit	Windows Server 2008/2012
CPU	Quad Core, 2.0 GHz	Intel Xeon E5-2407
Memory	4GB	2 x 4GB RDIMM, 1333MHz
Hard Drive	SATA 7200 RPM	SAS 15k RPM
Storage Configuration	Internal JBOD	RAID5
Network Interface	1Gb NIC	Broadcom dual-port 1Gb
Video Card	On-board	On-board

#### Client-Side Requirements

	Minimum	Recommended
Operating System	Windows 7 Professional, 32-bit	Windows 7 Professional, 64-bit
CPU	Quad Core, 2.0 GHz	Intel Xeon E5-1620
Memory	2GB	2 X 2GB, 1600MHz, DDR3
Hard Drive	SATA 5400 RPM	SATA 7200 RPM
Network Interface	100Mbps	1Gbps
Video Card	PCI Express with 256MB RAM and DirectX support Minimum resolution: 1280x1024	512MB NVIDIA Quadro NVS 300 (2 DVI ports)

#### How to select your Latitude Tier?

Latitude Tier	Video Channels	Users	Failover Directories
Classic	Up to 70	20	1
Elite	Up to 250	50	5
Enterprise	Unlimited	Unlimited	Unlimited

All base licenses include five user connections, five web client connections and full functionality, with the exception of the following items that need to be ordered separately:

Video channel connections	Failover
Additional user connections	Redundancy
Mobile user connections	GIS map support
TruWitness connections	SDK and DSF connections
SceneTracker	

**\*Note:**

For ordering and hardware specification information, please refer to the DVTEL Price Guide and the Latitude System Specification Document. Both can be obtained by contacting your Local Regional Sales Manager ([info@dvstel.com](mailto:info@dvstel.com)).



VIDEO INNOVATION TO SECURE YOUR BUSINESS

Specification sheet is subject to change without notice.