

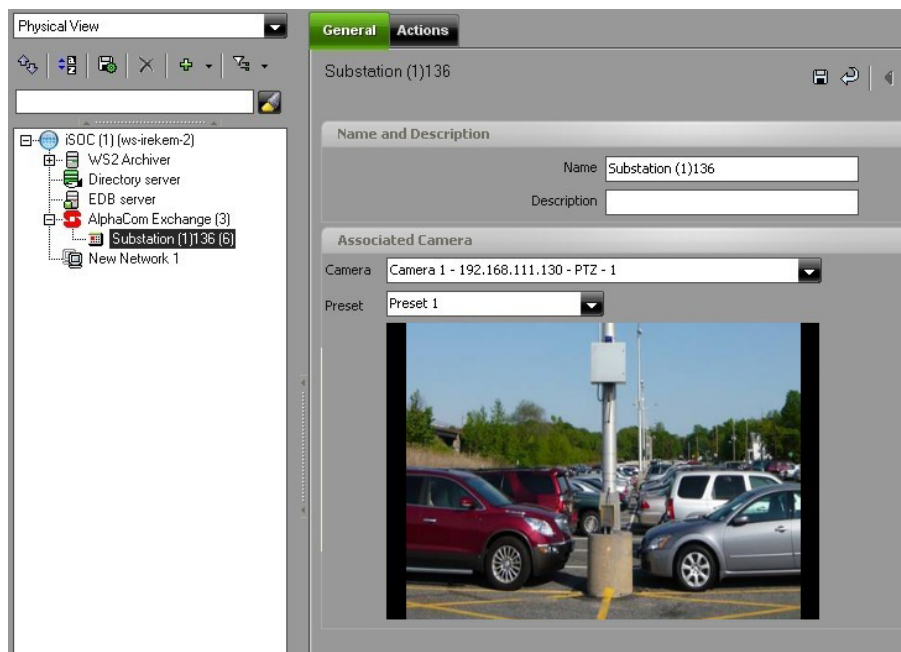
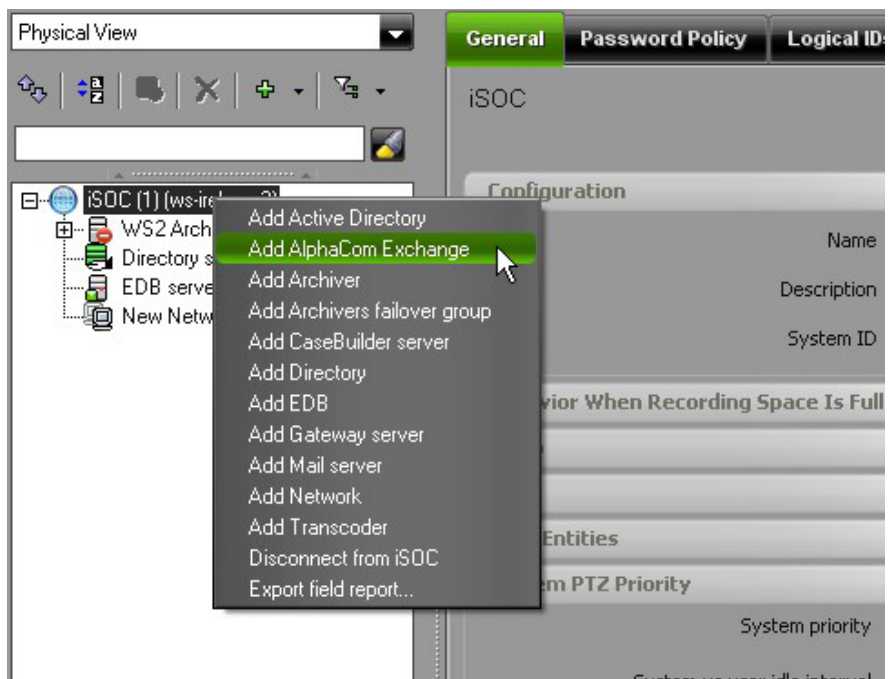
## DVTEL Stentofon Integration Applications & Integration Center

The DVTEL Stentofon module integrates DVTEL's Latitude NVMS with Stentofon AlphaNet devices. Stentofon AlphaNet devices are added as native DVTEL entities.

Users can add an AlphaCom Exchange unit in Latitude and view the AlphaCom Exchange and substations on Latitude trees. The integration automatically queries the exchange unit and retrieves the substations into Latitude.

AlphaCom substations can be viewed either in the Physical tree under the parent exchange unit, or in the Logical tree.

Each substation has a corresponding alarm type created by the integration. Users can configure Latitude actions to be conducted upon substation alarms.



DVTEL's Applications & Integration (AIC) group provides custom automation and operation and third-party integration to DVTEL's intelligent Security Operations Center (iSOC) platform so that every DVTEL solution has the ability to be tailored to meet the requirements of the customer.

# DVTEL Stentofon Integration

## Video monitoring

- Stentofon substations residing on the ControlCenter navigation tree can be either double-clicked or drag-and-dropped to an available tile. Substations with an associated Latitude camera will display a live view of the associated camera.

## Recording and Playback

- If an alarm is triggered due to a specific substation call, the associated Latitude camera will start recording; if a ControlCenter tile was armed for alarm, a live view of the camera will display in the tile.

## Events, triggers and actions

- Stentofon stations calls can be monitored in Latitude to trigger an alarm.
- Each substation can be associated with a Latitude camera.
- Substation alarm types are created by the integration.
- Integration triggers DVTEL alarms initiated by Stentofon station calls. The camera selected in the substation is added to the alarm to “View Live”, in ControlCenter tile once this alarm is triggered.
- You can configure an action to execute for accessible or inaccessible event occurs by modifying the appropriate event in the station Actions tab.
- Substations residing on the ControlCenter navigation tree can be either double-clicked or drag-and-dropped to an available tile. Sensors with an associated Latitude camera will display a live view of the associated camera.
- Latitude actions can be selected and performed upon Stentofon calls.

## System

- Users can create an AlphaCom Exchange in Admin Center.
- Users can view AlphaCom Exchange and substations on Latitude trees.
- User can associate a camera to a substation.

## Latitude NVMS infrastructure

- Users enjoy the variety of Latitude features such as support of the most popular brands IP cameras and encoders, use of multiple video compressions, resilient architecture that supports camera, encoder and server failover and much more.
- The highly customizable DVTEL's Latitude Control Center client application can provide additional flexibility in viewing, recording and exporting audio and video to satisfy the needs form more complex video and audio tasks as well as monitoring a wide range of events and alarms. The advanced features of the DVTEL Latitude NVMS are always available for its users.

For additional information, please e-mail our presales team at [presales@dvtel.com](mailto:presales@dvtel.com) or visit our website at [www.dvtel.com](http://www.dvtel.com).

AIC-Stentofon  
June, 2015

**dvtel** *Now you can.*

VIDEO INNOVATION TO SECURE YOUR BUSINESS