

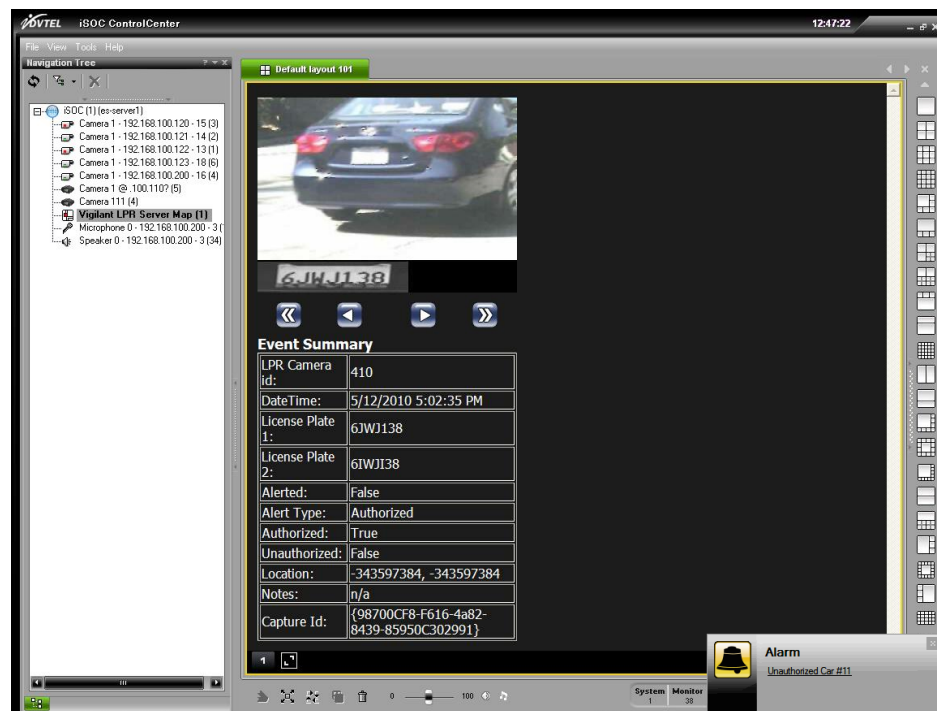
## DVTEL Vigilant Integration Applications & Integration Center

The DVTEL Vigilant module integrates DVTEL's Latitude Network Video Management System (NVMS) with Vigilant's License Plate Recognition (LPR) engine. The integration provides a seamless archiving and monitoring tool of events generated by Vigilant DSP CarDetector Fixed system inside Latitude's ControlCenter.

The integration allows users to monitor Vigilant's LPR events in Latitude and configure any Latitude supported action upon car read events. Vigilant LPR events received in Latitude are tagged, archived and bookmarked. Through DVTEL's ControlCenter, users can easily query for LPR events by license plate number and retrieve the recorded video streams.

The integration provides a simple way to navigate between LPR alarms in Latitude that displays snapshots of the LPR event and the event details.

dv.tel.com



DVTEL's Applications & Integration Center (AIC) group provides custom automation and operation and third-party integration to DVTEL's intelligent Security Operations Center (iSOC) platform so that every DVTEL solution has the ability to be tailored to meet the requirements of the customer.

# DVTEL Vigilant Integration

## Configuration

- Users can add the Vigilant LPR server in DVTEL's Admin Center application.
- Vigilant LPR cameras can be added in Admin Center application and are displayed in Admin Center physical tree, logical tree and Control Center.
- Vigilant LPR server status (Online / Offline / Synchronizing) is displayed in Admin Center and can be stopped and started in Admin Center physical tree.

## Events and triggers

- Vigilant events can be configured as Latitude Alarm / Event.
- User can choose to create an incident for LPR event, which will allow him later on to query bookmarks with license plate number and retrieve the associated video.
- Users can configure different actions based on the LPR event such as send email; start recording; go to PTZ preset, etc.
- Vigilant LPR server added to the physical tree has an associated Latitude map. This map can be displayed inside Control Center and offers a convenient way to monitor past and present LPR events.
- LPR events can be set to alarm, event or ignore. An alarm triggered or event is dispatched when the LPR event is received in Latitude only if the response is set to alarm / event. Events set to ignore will not trigger an alarm or dispatch an event.
- Control Center displays the full description of the event like LPR Event type (Hot Alert, Authorized, Unauthorized, Detection), LPR camera ID, License Plate 1, License Plate 2, Alert Type, Data and Time of the event and LPR event instance ID (Capture ID).
- Configure actions (start recording, go to PTZ preset ...) to be executed along with event.
- If an alarm is triggered due to a specific camera, camera will start recording; if Control Center tile has been armed for alarm a live view of the camera will pop in the tile.

## Video Monitoring

- User can associate LPR camera to Latitude camera.
- LPR cameras in Control Center can either be double clicked or drag and dropped to an available tile and the associated Latitude camera will display live view.

## Snapshots Storage Management

- The alarms and snapshots waved in the system can be set to be stored for a configurable period of time.

For additional information, please e-mail our presales team at [presales@dvtel.com](mailto:presales@dvtel.com) or visit our website at [www.dvtel.com](http://www.dvtel.com).

AIC-Vigilant  
July, 2012

**dvtel** Now you can.

VIDEO INNOVATION TO SECURE YOUR BUSINESS