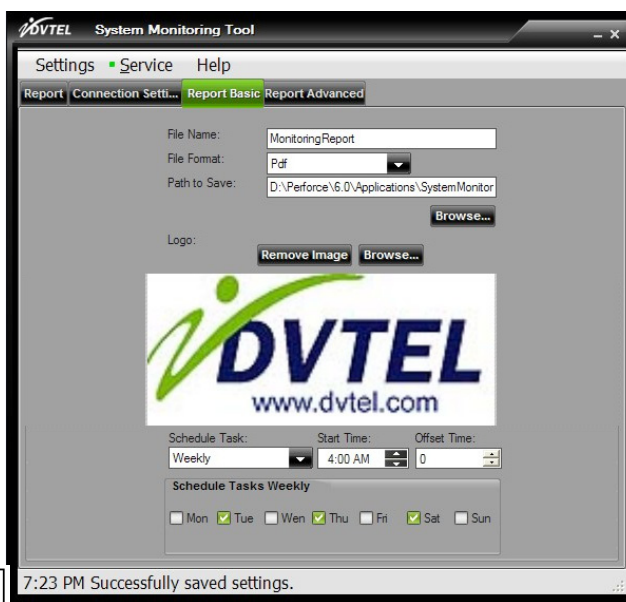


DVTEL System Monitoring Tool Applications & Integration Center

The DVTEL System Monitoring Tool runs on a schedule, periodic or manual basis to generate consolidated highly customizable reports on system configuration and system status of single or multiple directories as well as snapshots of every camera's live view as of the report date.

The DVTEL System Monitoring Tool provides a highly customizable report that allows users to get status about the DVTEL services, edge devices, recording, alarms and Latitude users. Users can configure the desired reports via an easy-to-use Configurator tool.

Users have the flexibility to define the logo used on the report and specify which monitoring sections should be part of the report. Users can configure the reports to be generated either in PDF or Microsoft Word Document format.



Recording status

Total number of cameras	3
Number of recording cameras	1
Number of ghosted cameras	0
Number of non recording cameras (excluding ghosted cameras)	2
List of non recording cameras (excluding ghosted cameras):	
1 . Camera 1 - 192.168.200.122 - 7	
2 . Camera 1 - 192.168.200.200 - 5	

Recordings

- Camera 1 - 192.168.200.121 - 6**
From 10/26/2010 02:01:57 till now.
- Camera 1 - 192.168.200.122 - 7**
From 10/26/2010 02:01:56 till 10/26/2010 02:03:55
- Camera 1 - 192.168.200.200 - 5**
From 10/26/2010 02:01:56 till 10/26/2010 02:03:55

User information

Total number of users	2
Number of currently logged in users	1
List of currently logged in users:	
1 . System Administrator	

Sites that have multiple Latitude directories can be monitored from one location by a single DVTEL System Monitoring Tool.

DVTEL's Applications & Integration Center (AIC) group provides custom automation and operation and third-party integration to DVTEL's intelligent Security Operations Center (iSOC) platform so that every DVTEL solution has the ability to be tailored to meet the requirements of the customer.

DVTEL System Monitoring Tool

System monitoring tool capabilities

- Users can start/stop the System Monitoring service.
- Users can manually generate or cancel currently generated reports.
- Users can monitor report progress.
- The following report settings can be configured:
 - Users can choose between pdf file format and a word document.
 - Users can select the logo to appear on the cover page of the report.
 - Users can schedule the report to run on a daily, weekly or monthly basis.
 - Users can select categories that will be printed in the report:
 - DVTEL services status – the report shows status for the following DVTEL services: Directory, Archiver, EDB, Case Builder, Gateway, Transcoder. For each installed service the report will show if it's accessible, last boot time, state, network address, failover status, database status, and more.
 - Edge device status – total number of edge devices, number of online, offline and ghosted edge devices, and a list of offline devices.
 - Recording status – total number of cameras, number of recording, ghosted and non recording cameras, and a list of non recording cameras.
 - Recording summary per camera – list of all cameras in the system with total recording time span.
 - User information – total number of users, number of logged in users and a list of currently logged in users.
 - Alarm information – total number of alarm types, number of open instances and list of open alarm instances per alarm type.
 - Snapshot of each camera's live video – list of all cameras with a live snapshot, logical id and camera description; in case the camera is not accessible a red message is displayed.

For additional information, please e-mail our presales team at presales@dvstel.com or visit our website at www.dvstel.com.