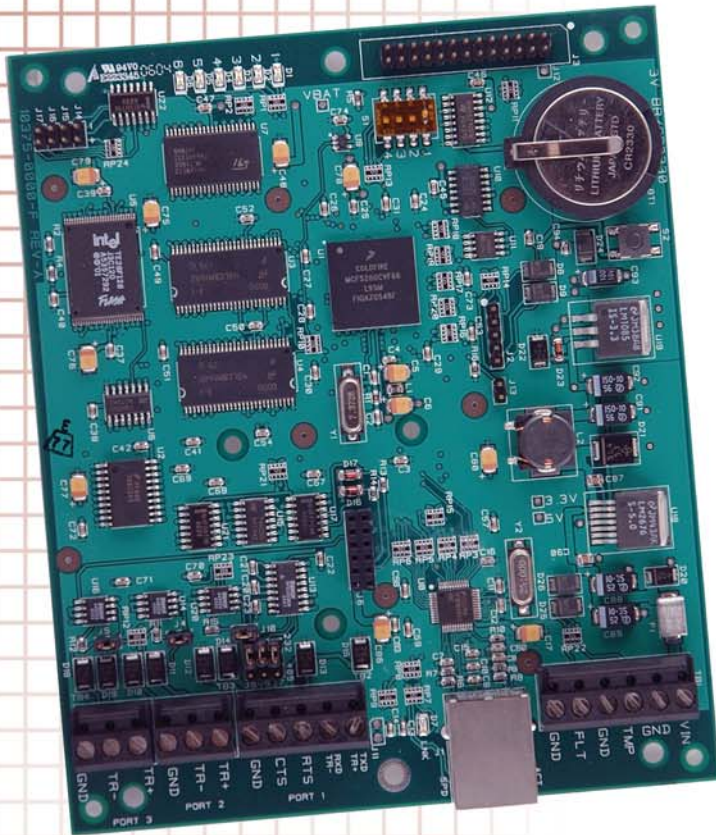


EP-2500



The concept is simple. Mercury Security provides a hardware foundation for access control systems. A trusted solution with a proven track record of reliability, versatility, and performance. The hardware platform is a mix of hardware components and features that can be configured in different ways to satisfy the requirements of any system.

The product is powerful. The EP-2500 is the next generation intelligent controller from Mercury Security. Windows or Linux interface. Access control, alarm management, and scheduled operations all in one package. And with new connection options, support for new standards, and an expanded feature set, EP-2500 is the controller of choice.

- UL294 Recognized, CE Compliant
- AES 128 bit encryption, NIST Certified
- HSPD-12/FIPS201 Compliant

The result is success. Leverage Mercury's market acceptance and value to help bring your system product to the forefront of the market.



MERCURY SECURITY
CORPORATION

EP-2500

FEATURES

CONNECTION

Primary Port: 10/100 Ethernet
IP Server, IP Client, DHCP Client
HTTP, TLS, X.509, SNMP
Backup channel: RS-232, RS-485, Ethernet adapter,
Dial-up

ACCESS CONTROL

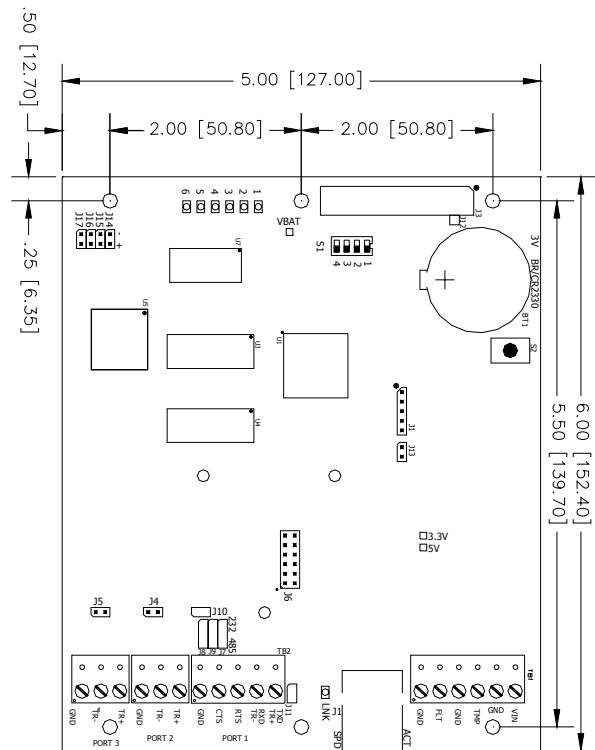
600,000 Cardholder capacity, 50,000 Transaction buffer
If/Then Macro capability
Single door, paired, master/slave, elevator
Strike modes: fail-safe or fail-secure
Door alarm monitoring
Door usage reporting
Anti-passback support
Area-based, reader-based, or time based
Hard, soft, or timed forgiveness
Area Management
Two man rule, two card rule, and multiple occupancy
Max. occupancy and occupancy thresholds
Nested areas
Card Formats:
8 active card formats per EP-2500
Entire card number reported on invalid read
19 digit (64-bit) UserId and 15 digit PIN numbers maximum
PIV-II, CAC, TWIC card compatible
32 Access Levels per cardholder
Precision Access
Activation/Deactivation Dates
Unused features do not consume memory space
Access verification by card/pin/biometric
Centralized biometric template management

ALARM MANAGEMENT

UL294 Compliant
Normally open/Normally closed, unsupervised, supervised.
Standard or custom end-of-line resistances
Line conditioning: programmable sensitivity and hold time
Entry delay with latching/non-latching option
Entry/exit delay

BURG FUNCTIONS

Centrally managed configuration
Keypad control and status
Command Transaction History includes user, command
Command Authority controlled by user, time schedule



TECHNICAL SPECIFICATIONS

Primary Power	12-24 Vdc +/- 10%, 300mA maximum
Serial Ports	Primary 10/100 Ethernet Port 1:RS-232, 2-wire RS-485, Modem, or Ethernet adapter Port 2: RS-485, 2-wire Port 3: RS-485, 2-wire
Inputs	Two dedicated: tamper and power monitor
Dimensions	5.0" x 6.0" x 1.0" (127mm x 152mm x 25mm)
Temperature	0-70°C operational, -55-85°C storage
Humidity	0-95% RHNC
Standards	UL294 Recognized, CE Compliant, FCC Part 15 Class A, NIST Certified Encryption

This information is subject to change without notice.
© 2007 Mercury Security Corporation

TEL: 562.986.9105

WWW.MERCURY-SECURITY.COM

FAX: 562.986.9205

2355 MIRA MAR AVENUE
LONG BEACH, CA 90815-1755

