

The SC1DN-S is a small, self-contained day/night IP camera that does not rely on additional components for video analysis. The camera analyzes the captured video signal to send alarms and notify of people, vehicles and objects that cross a perimeter, enter a pre-defined region, are left behind, or are removed from a scene. Users can set customizable rules and criteria to define the region and what to detect.

The SC1DN-S is the newest version of the field-proven SC1 family, adding H.264 compression on top of improved performance. Current users of the SC1 can upgrade to the new version using a remote firmware upgrade.

The SC1DN-S features IR cut filter removal and low noise levels, which achieve maximum detection capabilities by optimizing the captured video signal and maintaining an extremely low False Alarm Rate (FAR). As part of the ioicam intelligent video camera series, the SC1DN-S features analog and IP streaming video outputs, which enable hybrid connectivity to both legacy and IP-based CCTV networks.

The camera can be configured via a standard web browser and includes automated sensitivity adaptation for minimal maintenance and ease of set up.

Key Features

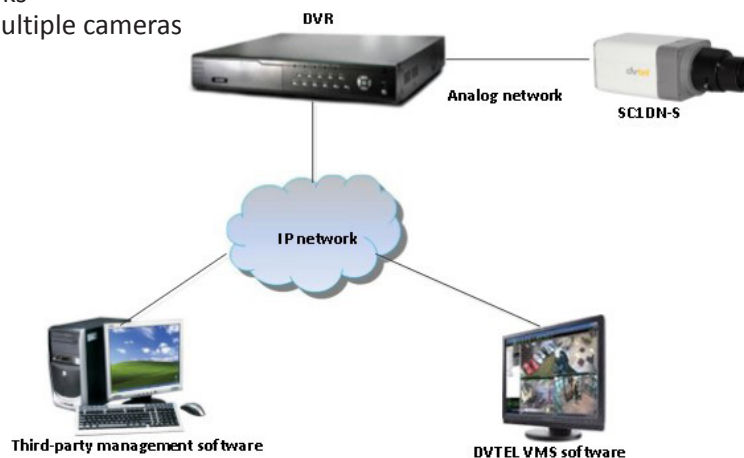
- Fully integrated video analysis and encoding hardware/software solution
- DSP-based real-time video analysis
- High probability of detection, low false alarm rate
- Hybrid video output (analog and IP streaming)
- Integrates with existing analog cameras (stationary or PTZ) for retrofitting existing installations

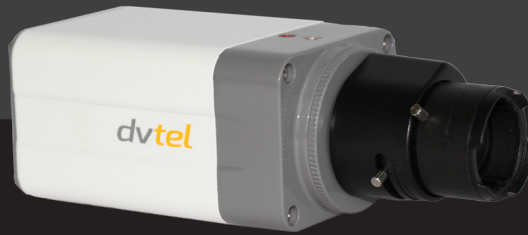
New Features

- Storage on the Edge (SoE) with remote backup
- Site Viewer for accessing remote units over the web for live and SoE playback
- Port forwarding for remote unit setup
- MTU setup for encrypted networks
- Batch Solo Setup recording for multiple cameras
- Improved analytic detection

Detection Types

- Intrusion detection:
 - Regional entrance
 - Tripwire
 - Fence trespassing
- Unattended baggage detection
- Object removal detection
- Stopped vehicle detection
- Loitering detection
- Camera tampering detection





Specifications

Channels		
Number of Intelligent Video Analysis Channels	1	
Analog Video Output		
TV Standard	Composite 1Vp-p - NTSC or PAL	
Physical Connector	1x BNC 75Ω	
Digital Encoding		
IP Video Streaming	H.264, MPEG-4 SP, MJPEG	
Maximum Resolution per Channel	VGA	
H.264 Frame Rate (PAL/NTSC)	MPEG-4 SP: up to 30 FPS for all resolutions; H.264: up to 25/30 FPS for CIF and 2CIF, 18 FPS for VGA, and 12/15 FPS for D1 and 4CIF	
Bit Rate	CBR, VBR	
Storage on the Edge	3,800Mb event recording	
Camera Specifications		
Lens	Sensor	1/4" CMOS image sensor; 540 HTVL, 640 (H) x 480 (V) effective pixels (NTSC or PAL)
	Lens Mount	CS lens mount Optional C mount adapter
	Noise	Dynamic range up to 82 dB
Operation	IR Cut Filter	Auto/manual
	Exposure	Auto DC iris control, Automatic gain control (AGC)
	Backlight Compensation	On/ Off

Network	
Ethernet (IEEE 802.3/802.3u)	1x Ethernet RJ45 interface
Services and Protocols	TCP/IP, UDP/IP, HTTP, SMTP, DHCP, DNS, SNTP
Video Streaming	RTP/RTSP
Alarms/Commands	TCP/IP, HTTP
Browsers	Internet Explorer 8, 9, 10, and 11
Operating System	Windows XP, 7, 8, and 8.1
I/O Interface	
Alarm Input	1x dry contact
Relay Output	1x relay output (rated load 0.3A@30VDC)
Power Source	
Voltage	12VDC, 24VAC
Power Consumption	3.6W @ 12VDC; 6W @ 24VAC
Physical Dimensions	
Dimensions (W x H x D)	73 x 60 x 133 mm/2.87 x 2.36 x 5.24"
Environmental Specifications	
Operating Temperature	0° to 50°C (32° to 122°F)
Operating Humidity	5% to 90% (non-condensing)
Certifications	
Safety	UL, CE
Electromagnetic Interference (EMC)	FCC 47 CFR Part 15, Subpart B, Class A; CE Class A
Environmental	RoHS