

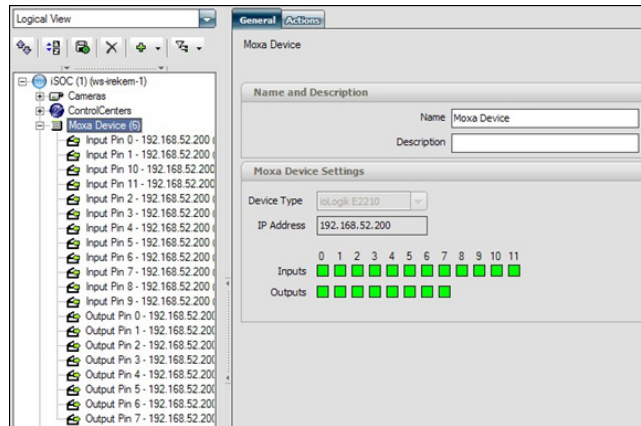
Moxa Integration

Professional Engineering Services

DVTel's Professional Engineering Services (PES) Group provides custom automation and operation and 3rd party integration to DVTel's intelligent Security Operations Center (iSOC) platform so that every DVTel solution has the ability to be tailored to meet the requirements of the customer.

Moxa provides products which are specially designed to connect industrial devices over media such as RS-485, cellular networks, Ethernet and more. This integration is between Moxa's E2210 Active Network I/O unit and DVTel's Latitude Network Video Management System (NVMS).

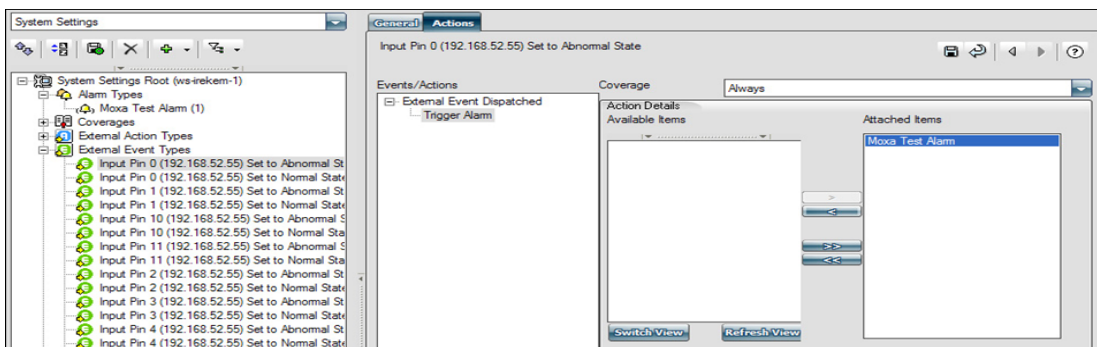
In the Logical Tree, under your Moxa device, new Input and Output entities are added. For the ioLogik E2210 there are 12 inputs and 8 outputs.



In the System Settings Tree, under External Events, two new events were created for each Moxa Input, for a total of 24 new External Events and two new actions were created for each Moxa Output, for a total of 16 new External Actions.

Moxa-to-Latitude Scenario

If Moxa input changes state, Latitude NVMS is aware of this Input change and dispatches the External Event associated with this specific Input pin.



Latitude NVMS-to-Moxa Scenario

If a Latitude event is triggered, a Moxa Output pin will change state.

Moxa-to-Latitude NVMS-to-Moxa Scenario

Moxa Input state change triggers a Latitude NVMS event, which in turn force a Moxa Output pin to change state.