

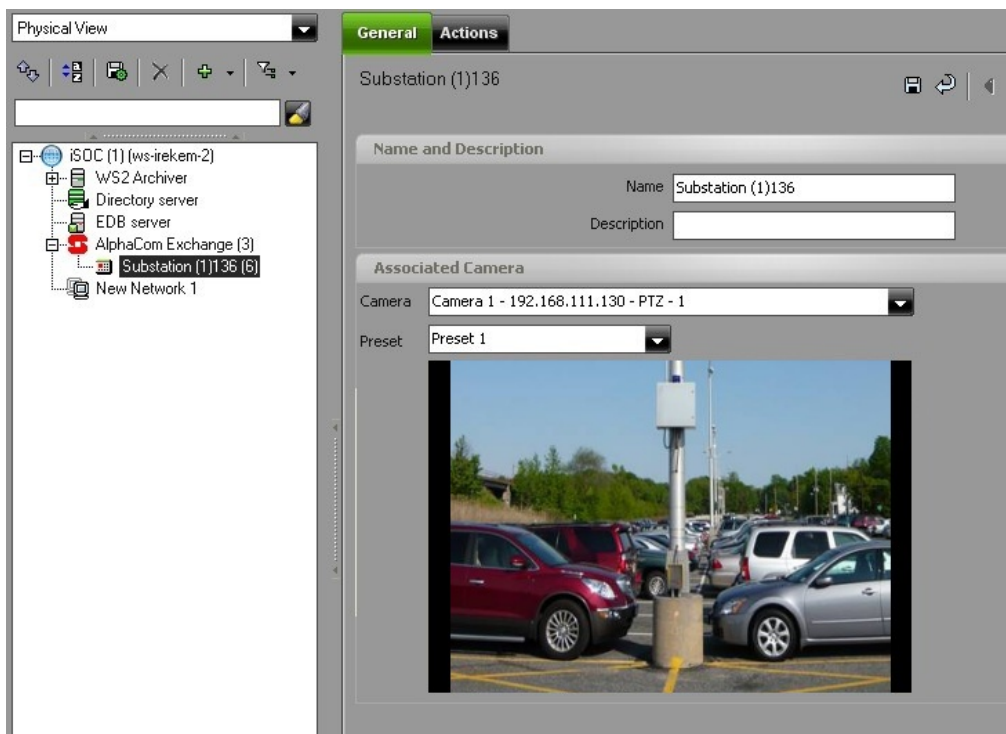
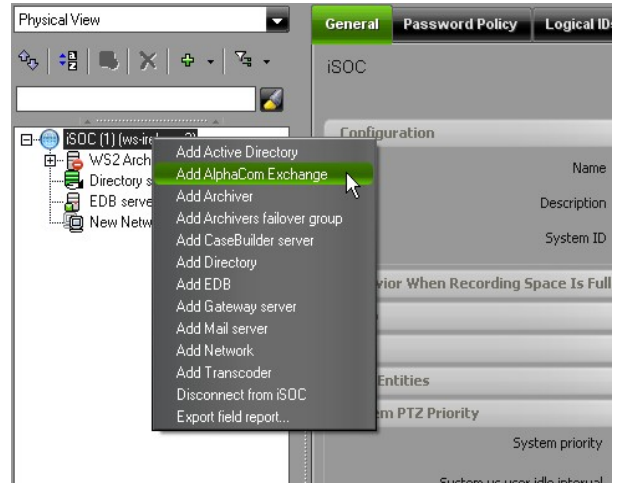
DVTel Stentofon Integration Professional Engineering Services

The DVTel-Stentofon module integrates DVTel's Latitude NVMS with Stentofon AlphaNet devices. Stentofon AlphaNet devices are added as native DVTel entities.

Users can add an AlphaCom Exchange unit in Latitude and view the AlphaCom Exchange and substations on Latitude trees. The integration automatically queries the exchange unit and retrieves the substations into Latitude.

AlphaCom substations can be viewed either in the Physical tree under the parent exchange unit, or in the Logical tree.

Each substation has a corresponding alarm type created by the integration. Users can configure Latitude actions to be conducted upon substation alarms.



DVTel's Professional Engineering Services (PES) Group provides custom automation and operation and third party integration to DVTel's intelligent Security Operations Center (iSOC) platform so that every DVTel solution has the ability to be tailored to meet the requirements of the customer.

DVTel Stentofon Integration Capabilities

Video Monitoring

- Stentofon Substations residing on the ControlCenter navigation tree can be either double-clicked or drag-and-dropped to an available tile. Substations with an associated Latitude camera will display a live view of the associated camera.

Events and Actions

- Stentofon Stations calls can be monitored in Latitude to trigger an alarm.
- Each substation can be associated with a Latitude camera.
- Substation alarm types are created by the integration.
- Integration Triggers DVTel alarms initiated by Stentofon station calls. The camera selected in the substation is added to the alarm to “View Live”, in ControlCenter tile once this alarm is triggered.
- You can configure an action to execute for accessible or inaccessible event occurs by modifying the appropriate event in the station Actions tab.
- Substations residing on the ControlCenter navigation tree can be either double-clicked or drag-and-dropped to an available tile. Sensors with an associated Latitude camera will display a live view of the associated camera.
- Latitude actions can be selected and performed upon Stentofon calls.

Recording and Playback

- If an alarm is triggered due to a specific substation call, camera will start recording; if a Control Center tile was armed for alarm, a live view of the camera will display in the tile.

System

- Users can create an AlphaCom Exchange in Admin Center.
- Users can view AlphaCom Exchange and Substations on Latitude trees.
- User can associate a camera to a Substation.