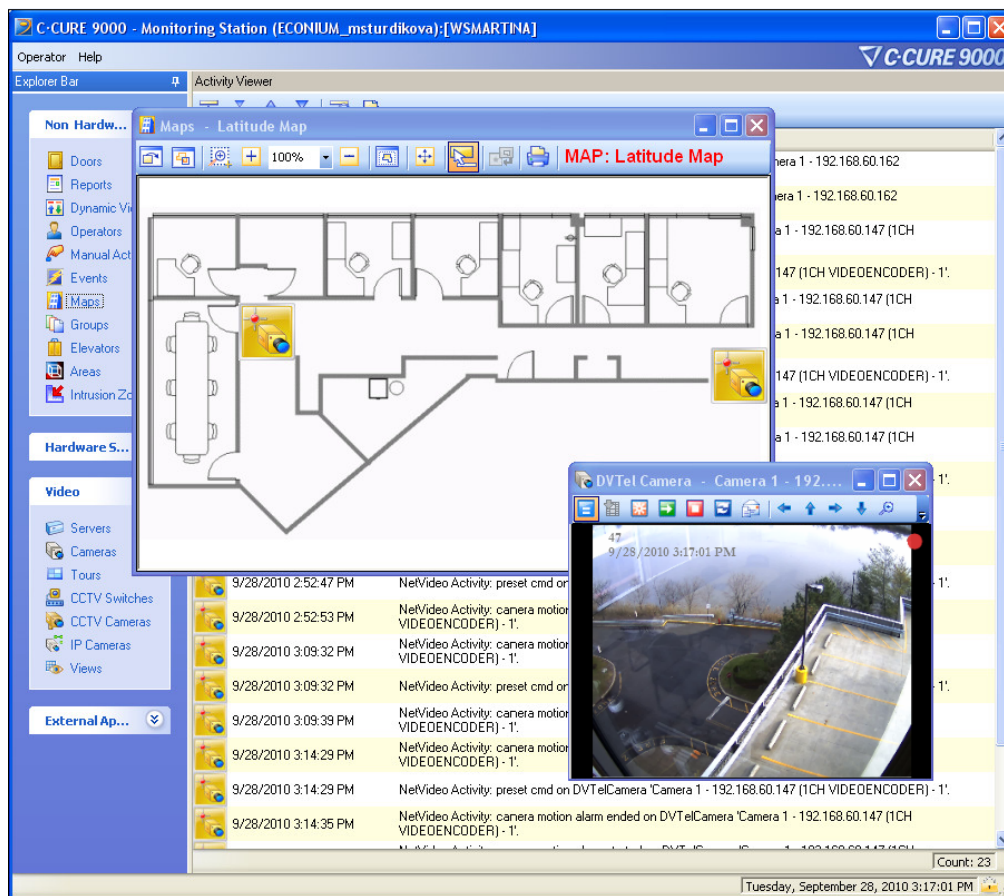


# DVTel Software House Integration Professional Engineering Services

The DVTel Software House (B) module integrates Software House C•CURE 9000 system with DVTel Latitude NVMS allowing Software House to act as the front end.

The DVTel Software House integration module expands C•CURE 9000 capabilities by allowing live and recorded video viewing of Latitude NVMS cameras from within the C•CURE 9000 user interface. End users can also monitor events such as motion and analytics, which is of particular value since the DVTel platform already includes integrated video analytics. Users of the C•CURE 9000 monitoring station will enjoy a single operating platform for both access control and video, and they will be able to perform video export, take snapshots, use on-screen PTZ control, trigger actions, display OSD, and many more features right from the comfort of their C•CURE monitoring station.



DVTel's Professional Engineering Services (PES) Group provides custom automation and operation and third party integration to DVTel's intelligent Security Operations Center (iSOC) platform so that every DVTel solution has the ability to be tailored to meet the requirements of the customer.

## DVTel Software House Integration Capabilities

### Video Monitoring

- Display live view of a single or group of cameras manually or upon an event.
- Integration supports import or manual creation of DVTel cameras.
- Users can easily identify the camera being viewed by an enhanced on screen display of the camera name, date/time and live recording or playback status.
- Integration supports C•CURE 9000 maps – users can add DVTel cameras to the C•CURE 9000 maps and monitor the state of the cameras as well as pop up a live view of a camera right from the map.
- The module provides seamless integration with C•CURE 9000 PTZ controls as well as on screen PTZ control.
- Users can monitor video events such as motion detection, relay and analytics, for instance Intrusion Started/Ended, Vehicle Stopped, Unattended Object, and Object Removed etc.

### Recording and Playback

- Users can display recorded video right from the C•CURE 9000 Activity Viewer.
- Query for recorded clips of a specific camera according to start and end date/time is supported.
- Users can control playback of recorded clips.

### Events Triggers and Actions

- Users can configure access control actions upon video and analytics events which allow the user to later on query for events by the person's name.
- Users can configure video actions upon access control events, such as start recording.

### System

- Integration supports video export with flexibility to choose the length, file size and video format.
- Users can save and email a snapshot of either live or recorded video.
- Multi-directory support that allows a C•CURE 9000 operator to login to different systems from within the same application.
- Directory failover is supported.

### Latitude NVMS Infrastructure

- Users enjoy the variety of Latitude features such as support of the most popular brands IP cameras and encoders, use of multiple video compressions, resilient architecture that supports camera, encoder and server failover and much more.
- The highly customizable DVTel's Latitude Control Center client application can provide additional flexibility in viewing, recording and exporting audio and video to satisfy the needs for more complex video and audio tasks as well as monitoring a wide range of events and alarms. The advanced features of the DVTel Latitude NVMS are always available for its users.