

## Initial Configuration

### 1. Prepare the camera:

- a. Remove the camera's protective packaging.

### 2. Lens Mounting:

- a. Remove the plastic insert covering the threaded camera lens-mount.
  - TIP:** Do not touch the sensor or allow dust to accumulate in the lens mount.
- b. If you are using a C-mount lens, screw a 5mm adapter ring into the C-Mount to convert it to a CS-Mount. See figures below.



C to CS Mount Adapter



Assembled Adapter

- c. Align the lens threads into the lens mount and screw in the lens.
- d. If your lens has a DC auto iris, plug the auto iris cable from the lens assembly into the AUTO IRIS control port of the camera.

### 3. Attach an Ethernet cable:

- a. Connect one end of a Cat 5 Ethernet cable to the Ethernet port on the side of the camera, and the other end to a Power Sourcing Equipment (PSE) device, such as a PoE switch.
- b. Verify that the LED on the port is green, indicating a good network connection. A yellow LED flashes when there is network activity.

**NOTE:** The camera IP Address and the subnet mask IP Address are automatically supplied by the DHCP server. If the DHCP server is not available, the camera's default IP address is 192.168.0.250.

**TIP:** A camera setup adapter, such as Veracity Pinpoint, can be used to connect a laptop directly to the camera using PoE.

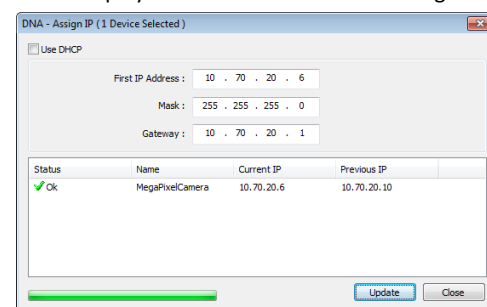
**NOTE:** If your computer's OS is IE 9, work in Compatibility Mode.

### 4. Set the camera's IP address:

- a. Open the DNA application. Select the unit requiring IP assignment. See figure below.
- b. Right-click the mouse and select the unit or press the Assign IP button to open the DNA Assign IP screen.

Device type	Vendor name	Model name	Status	Login Status	IP address	Name	Firmware version
camera	DVTel	CF-4221-00	Online	Authenticated	10.70.20.234	MegaPixelCamera	dt20121228NSA
camera	DVTel	CF-3211-00	Online	Authenticated	10.70.20.22	MegaPixelCamera	dt20121228NSA
camera	DVTel	CM-4321-00	Online	Authenticated	10.70.20.30	MegaPixelCamera	dt20121228NSA
camera	DVTel	CM-3211-10	Online	Authenticated	10.70.20.211	MegaPixelCamera	dt20121228NSA
camera	DVTel	CM-4321-00	Online	Authenticated	10.70.20.11	MegaPixelCamera	dt20121009NSA
camera	DVTel	CM-3211-00	Online	Authenticated	10.70.20.10	MegaPixelCamera	dt20121009NSA
camera	DVTel	CM-3211-01	Online	Authenticated	10.70.20.222	MegaPixelCamera	dt20120914NSA
camera	DVTel	CM-3211-10-1	Online	Authenticated	10.70.20.236	MegaPixelCamera	dt20120914NSA

- c. If your network does not have a DHCP server, enter the IP Address, Mask (Netmask) and Gateway values in the dialog box displayed below.
- d. Click **Update** and wait for OK status to be displayed. The IP value has been assigned.



### 5. Disconnect the cable:

- a. Disconnect the Ethernet cable.
- b. If you are using a power supply, turn it off and disconnect it. The camera is ready for mounting in a site installation.
- c. Refer to the camera's user manual for mounting instructions.

## Site Installation

**WARNING:** The Quasar CF-3211/CF-4221/CF-4251 fixed camera must be kept in a clean and dry indoor environment or in the protective outdoor mounting kit supplied with the outdoor model. Operating temperature should be maintained within -10°C ~ 50°C (14° ~ 122°F). Operating humidity should be between 10-90% (non-condensing). The camera should be kept dry, free from water condensation, dust, dirt, and smoke.

### 1. Mounting the camera:

#### Indoor Installations (no housing)

- a. Install the camera in the ceiling, wall, or on a flat surface. A security camera wall-mount bracket stand, sturdy enough to hold the camera in a fixed position for the field of view, is required.
- b. Screw the bracket or stand to the mounting socket on the top of the camera.

#### Indoor/Outdoor Installations (using a typical protective camera housing)

For outdoor installation, the camera must be installed in a protective housing such as a DVTel CF-X201-00 camera housing. Refer to the housing manufacturer's installation instructions.



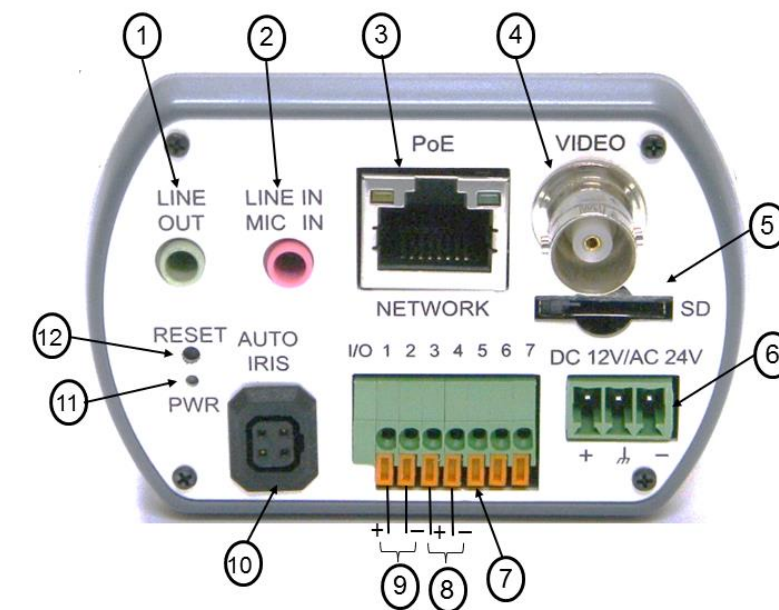
### 2. Attach cables:

Thread cables through opening at the side of the camera:

- a. Plug the Cat 5 cable into the camera's Ethernet port.
- b. Plug the other end of the cable into an IEEE 802.3at PoE switch.
- NOTE:** Connection to a 24VAC or 12VDC power supply is optional.
- c. If applicable, connect the Alarm In, Alarm Out, Audio In and Audio Out terminal blocks to external devices.
- d. Connect the other end of the Cat 5 cable to the network.

## Connecting the cables and wiring to the Camera

The Camera Connection Panel contains all of the input and output terminal blocks required for standard operation.




## CF-3211/CF-4221/CF-4251 Camera Connector Panel Terminals

ID	Connector Name	Pin No./Connector Type	Definition	Description
1	Line Out		Audio out	Two-way audio transmission
2	Line In/Mic In		Audio in	
3	PoE Network	RJ45, Network LEDs	10/100 Mbps Ethernet/PoE	Power over Ethernet
4	Video	BNC	Analog video out	For video output
5	SD		MicroSD card slot	For video storage (card not included)
6	DC 12V/AC 24V	1 - Power (+) 2 - Reserved 3 - GND (-)	12V DC	Power supply connection Indication (green LED)
		1 - Power (+) 2 - Earth GND 3 - Power (-)	24V AC	
7 to 9	I/O 1 to 7	1 - Output (+) 2 - Output (-)	Alarm output	Terminal connector block
		3 - Input (+) 4 - Input (-)	Alarm input	
		5 - GND	Grounding	
		6 - D (-) 7 - D (+)	Reserved. Do NOT connect	
10	Auto Iris	DC Iris lens connector	DC iris port	Auto iris connector
11	PWR	N/A	Power LED	Power indication
12	RESET	N/A	Reset	Restores factory default settings

## Adjusting and Framing-up the Camera View

### 1. Camera Access and Login:

Access the camera in one of the following ways:

- If using the DNA application, click the **DNA** icon . In the Discover List, click to select the camera, right-click to open the shortcut menu, and select **Browse**.
- If using a web browser, enter the camera's IP address as the URL.

### 2. Before logging into the camera:

A client program is installed automatically on a PC once it is connected to the camera. Before accessing the camera, ensure that ActiveX controls can be downloaded by (a) changing the ActiveX controls and plug-in settings or (b) setting the Internet security level to default. For further details, refer to the camera's user manual.

ActiveX Controls and Plug-in Settings	Internet Security Level
<ol style="list-style-type: none"> <li>Start Internet Explorer.</li> <li>Select <b>Tools</b> from the main menu of the browser.</li> <li>Click <b>Internet Options</b>.</li> <li>Click the <b>Security</b> tab and select <i>Internet</i>.</li> <li>Click <b>Custom level</b> to change ActiveX settings.</li> <li>Set <i>ActiveX controls and plug-ins</i> items to <b>Prompt</b> or <b>Enable</b>.</li> </ol>	<ol style="list-style-type: none"> <li>Start Internet Explorer.</li> <li>Select <b>Tools</b> from the main browser menu.</li> <li>Click <b>Internet Options</b>.</li> <li>Click the <b>Security</b> tab and select <i>Internet</i>.</li> <li>Page down, press <i>Default Level</i>. Click <b>OK</b> to confirm.</li> <li>Close the browser window.</li> <li>To access the camera, open a new browser window.</li> </ol>

### 3. Camera Login:

The camera's IP address is automatically supplied by the DHCP server. To access the camera for the first time, use the Configurator application to change the camera's IP address.

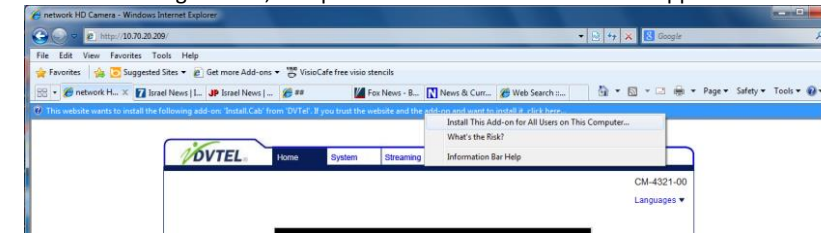
### 4. Login ID and Password:

- Enter the camera's IP address in the URL bar of the browser window and press the Enter key.
- Enter the default user name (*Admin*) and password (*1234*).

**NOTE:** The user name is case-sensitive.

### 5. Install the ActiveX control:

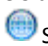
- After connecting camera, a request to install the ActiveX control appears below the URL bar.



- Right-click on the information bar, and select **Install ActiveX Control...** to permit ActiveX control installation.
- In the pop-up security warning window, click **Install** to start downloading the DC Viewer software onto the PC.
- Click **Finish** when the DC Viewer installation is completed.

**NOTE:** Before accessing the camera, if you have previously installed the DVTEL Web Player (DCViewer) on the PC, use the Windows Add/Remove program to uninstall the existing DCViewer from the PC. For more information, refer to the user's manual.

## Attach in Latitude

- In the Latitude application, on the Sidebar click **Physical View**.
- On the Navigation Tree click the  **System name**.
- Select the **Discovery** tab and do the following:
  - Under **Cameras and Encoders**, verify that **DVTEL HD Series** is selected.
  - Click **Start**. The camera details appear in the Discovery table.
  - If the camera wasn't found after running **Start**, click **Discover Unit Manually**.
  - In the dialog box that opens, enter the camera's IP address, select **DVTEL HD Series**, and click **OK**.
- In the Discovery table, right-click the camera, select **Attach**, and click the Archiver name to attach to.



Name	Archiver	IP address	MAC address	Manufac
10.70.20.150 (Altitude - HD Elite IP Camera)		10.70.20.150	00-00-89-08-23-7F	DVTEL
10.70.20.164 (Altitude - HD Classic IP Came...		10.70.20.164	00-00-89-04-D6-CF	DVTEL
10.70.20.190 (Altitude - HD Classic IP Came...		10.70.20.190	00-00-89-08-D9-DD	DVTEL
10.70.20.193 (Altitude - HD Classic IP Came...		10.70.20.193	00-00-89-07-9F-BB	DVTEL
10.70.20.194 (Altitude - HD Classic IP Came...		10.70.20.194	00-00-89-08-3B-8E	DVTEL
10.70.20.199 (Altitude - HD Classic IP Came...		10.70.20.199	00-00-89-05-29-9C	DVTEL

- When finished, click  to save.

## Models in the CF-3211/CF-4221/CF-4251 series:

Model Number			Description
CF-3211-00	CF-4221-00	CF-4251-00	Indoor camera with varifocal lens
CF-3211-01	CF-4221-01		Outdoor camera with varifocal lens
CF-3211-10	CF-4221-10		Indoor camera with motorized lens
CF-3211-10-I	CF-4221-10-I		Indoor camera with motorized lens and infrared IR illuminator
CF-3211-11	CF-4221-11		Outdoor camera with motorized lens
CF-3211-11-I	CF-4221-11-I		Outdoor camera with motorized lens and infrared IR illuminator

## How to contact DVTEL:

**North America:** 1-888-DVTEL77  
**Latin America:** +52 555580 5618  
**EMEA:** +44 (0) 1494 430240  
**APAC:** +65 6389 1815  
**Hong Kong:** +852 3667 9295  
**India:** +91 (129) 431 5031  
**ANZ/Pacific:** +61 8 8235 9211

For assistance, email us at [support@dvstel.com](mailto:support@dvstel.com) or visit <http://www.dvstel.com/support>.

© DVTEL, Inc. All rights reserved worldwide. Printed March 2014.

**dvstel**