

Initial Configuration

1. Prepare the camera:

Remove the camera from the package.

2. Attach an Ethernet cable:

- Connect one end of a Cat 5 Ethernet cable to the camera's Ethernet port, and the other end (RJ45) to a Power Sourcing Equipment (PSE) device, such as a PoE switch.
- Verify that the LED on the port is green, indicating a good network connection. A yellow LED flashes when there is network activity.

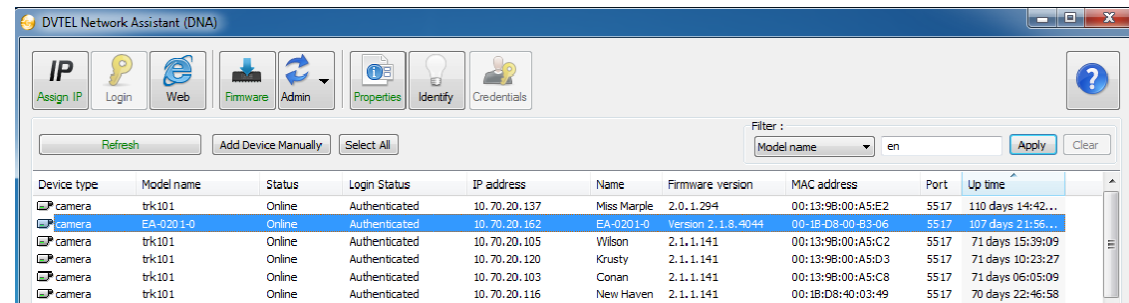
NOTE: The camera IP Address and the subnet mask IP Address are automatically supplied by the DHCP server.

TIP: A camera setup adapter, such as Veracity Pinpoint, can be used to connect a laptop directly to the camera using PoE.

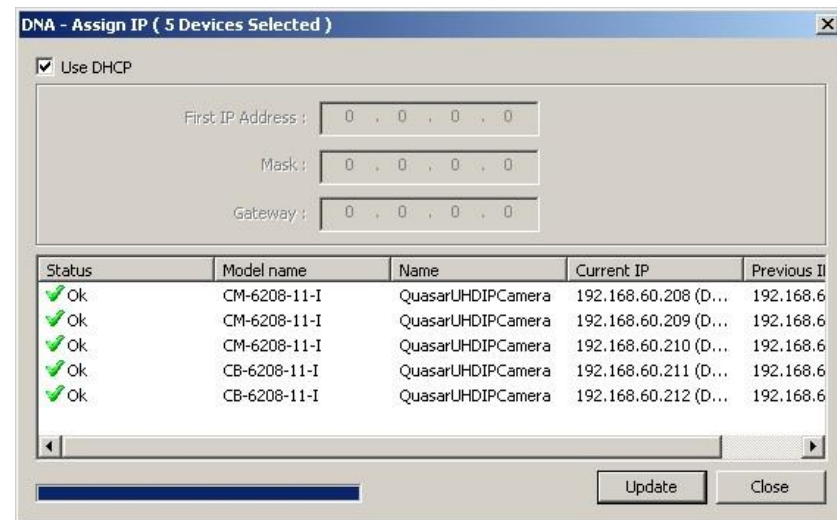
3. Set the camera's IP address:

- Open the DNA application (version 2.0.4.8 or later). Select the unit requiring IP assignment. See figures below.
- To open the DNA **Assign IP** screen, do one of the following:
 - Select the unit, right-click the mouse, and select the *Assign IP* option

- Select the **Assign IP** button from the toolbar



- If your network does not have a DHCP server, enter the IP Address, Mask (Netmask) and Gateway values in the dialog box displayed below.
- Click **Update** and wait for OK status to be displayed. The IP address has been assigned.



4. Disconnect the cable:

- Disconnect the Ethernet cable. The camera is ready for mounting.

Site Installation

1. Operating temperature range:

Install the camera where the operating temperature range is between -40°C ~ 50°C (-40° ~ 122°F), 0-95% relative humidity (non-condensing).

2. Mount the camera:

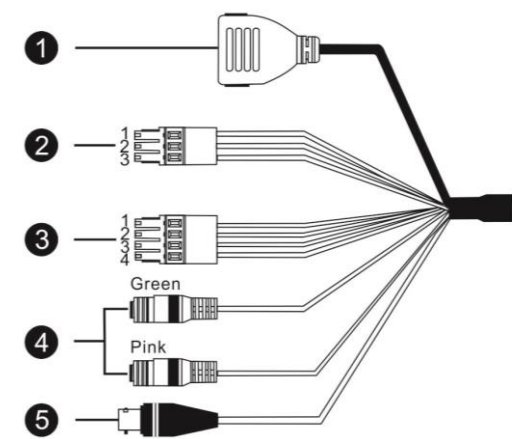
Install the Quasar Gen II bullet camera according to the camera's User and Installation Guide.

3. Attach cables:

Using the attached cables:

- Plug the Cat 5 cable into the camera Ethernet port and plug the other end of the cable into a network switch or an IEEE 802.3af PoE device.
- If applicable, connect the Alarm In, Alarm Out, Audio In and Audio Out terminals to external devices. See the figures and table below.
- If applicable connect an external power source to the terminals. See the figure and table below.

Camera Connectors




No	Cable	Pin	Definition	Remarks
1	RJ45	-	For network and PoE connections	
2	Power (12VDC/24VAC) (3-pin Terminal Block)	1	DC 12V - AC 24V 1	Power connection
		2	Reserved GND	
		3	DC 12V + AC 24V 2	
3	Alarm I/O (4-pin Terminal Block)	1	Alarm In -	Alarm connection
		2	Alarm In +	
		3	Alarm Out -	
		4	Alarm Out +	
4	Audio I/O	Green	Audio Out	Two-way audio transmission
		Pink	Audio In / Mic In	
5	BNC	-	For analog video output	

Adjusting and Framing-Up the Camera View

1. Camera Access and Login:

Access the camera in one of the following ways:

- If using the DNA application, click the **DNA** icon . In the Discovery List, click to select the camera, right-click to open the shortcut menu, and select **Browse**.
- If using a web browser, enter the camera's IP address in the address bar.

2. Before logging into the camera:

The client application is automatically installed when you connect to the camera through your PC/workstation web-browser for the first time. Before accessing the camera, ensure that ActiveX controls can be downloaded by (a) changing the ActiveX controls and plug-in settings or (b) setting the Internet security level to default. For further details, refer to the camera's User and Installation Guide.

ActiveX Controls and Plug-in Settings	Internet Security Level
<p>Step 1: Start Internet Explorer (IE 9, 10, or 11).</p> <p>Step 2: Select Tools from the main menu of the browser. Then click Internet Options.</p> <p>Step 3: Select the Security tab and click Internet. Then click Custom level to change ActiveX settings.</p> <p>Step 4: Set all ActiveX controls and plug-ins settings to <i>Prompt</i> or <i>Enable</i>.</p>	<p>Step 1: Start Internet Explorer (IE 9, 10, or 11).</p> <p>Step 2: Select Tools from the main menu of the browser. Then click Internet Options.</p> <p>Step 3: Select the Security tab and click Internet.</p> <p>Step 4: Click Default level. Click OK to confirm the setting. Close the browser window. Open a new window later to access the IP camera.</p>

3. Camera Login:

See the section titled Initial configuration for instructions on setting the cameras IP address.

4. Login ID and Password:

- Enter the camera's IP address in the browser's address bar and press the **Enter** key.
- Enter the default user name (*Admin*) and password (*1234*).


NOTE: The user name is case-sensitive.

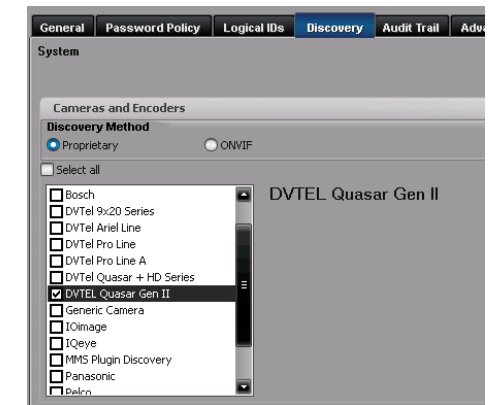
5. Install the ActiveX control:

- After accessing the camera through the web browser for the first time, a request to install the ActiveX control appears below the address bar.
- Right-click on the information bar, and select *Install ActiveX Control...* to permit ActiveX control installation.
- In the pop-up security warning, click **Install** to start downloading the DVPlayer software onto the PC.
- Click **Finish** when the DVPlayer installation is completed.

NOTE: Before accessing the camera, if you have previously installed an older version of the DVTEL Web Player (DVPlayer) on the PC, use the Windows Add/Remove program to uninstall the existing DVPlayer from the PC. For more information, refer to the camera's User and Installation Guide.

Attach in Latitude

- In the Latitude application, on the sidebar click **Physical View**.
- On the Navigation Tree click the  *System name*.
- Select the **Discovery** tab and do the following:
 - Under *Cameras and Encoders*, verify that **DVTEL Quasar Gen II** is selected.
 - Click **Start**. The camera details are displayed in the Discovery table.
 - If the camera wasn't found after running *Start*, click **Discover Unit Manually**.
 - In the dialog box that opens, enter the camera's IP address, select **DVTEL Quasar Gen II** and click **OK**.
- In the Discovery table, right-click the camera, choose **Attach**, and then click the Archiver name to attach.



Name	Archiver	IP address	MAC address	Manufac
10.70.20.150 (Altitude - HD Elite IP Camera)		10.70.20.150	00-D0-89-08-23-7F	DVTEL
10.70.20.164 (Altitude - HD Classic IP Came...		10.70.20.164	00-D0-89-04-D6-CF	DVTEL
10.70.20.190 (Altitude - HD Classic IP Came...		10.70.20.190	00-D0-89-08-D9-DD	DVTEL
10.70.20.193 (Altitude - HD Classic IP Came...		10.70.20.193	00-D0-89-07-9F-8B	DVTEL
10.70.20.194 (Altitude - HD Classic IP Came...		10.70.20.194	00-D0-89-08-3B-5E	DVTEL
10.70.20.199 (Altitude - HD Classic IP Came...		10.70.20.199	00-D0-89-05-29-9C	DVTEL

- When finished, click  to save.

Models in the CB Series:

Model Number	Description
CB-6204-11-I	QHD 1440p indoor/outdoor bullet IP camera, 3-8mm, F1.4 lens with 96-38° horizontal viewing angle
CB-6204-21-I	QHD 1440p indoor/outdoor bullet IP camera, 7-22mm, F1.4 lens with 42-14° horizontal viewing angle
CB-6208-11-I	UHD 4K indoor/outdoor bullet IP camera, 3.5-8mm F1.4 lens with 116-50° horizontal viewing angle
CB-6208-21-I	UHD 4K indoor/outdoor bullet IP camera, 9-22mm F1.4 lens with 45-18° horizontal viewing angle

How to Contact DVTEL:

North America: 1-888-DVTEL77
Latin America: +52 555580 5618
EMEA: +44 (0) 1494 430240
APAC: +65 6389 1815
China: +86 10 8586 8836
India: +91 (129) 431 5031
ANZ/Pacific: +61 8 8235 9211

For assistance, email us at support@dvstel.com or visit <http://www.dvstel.com/support>.