

## DVTEL Safety Dynamics Integration Applications & Integration Center

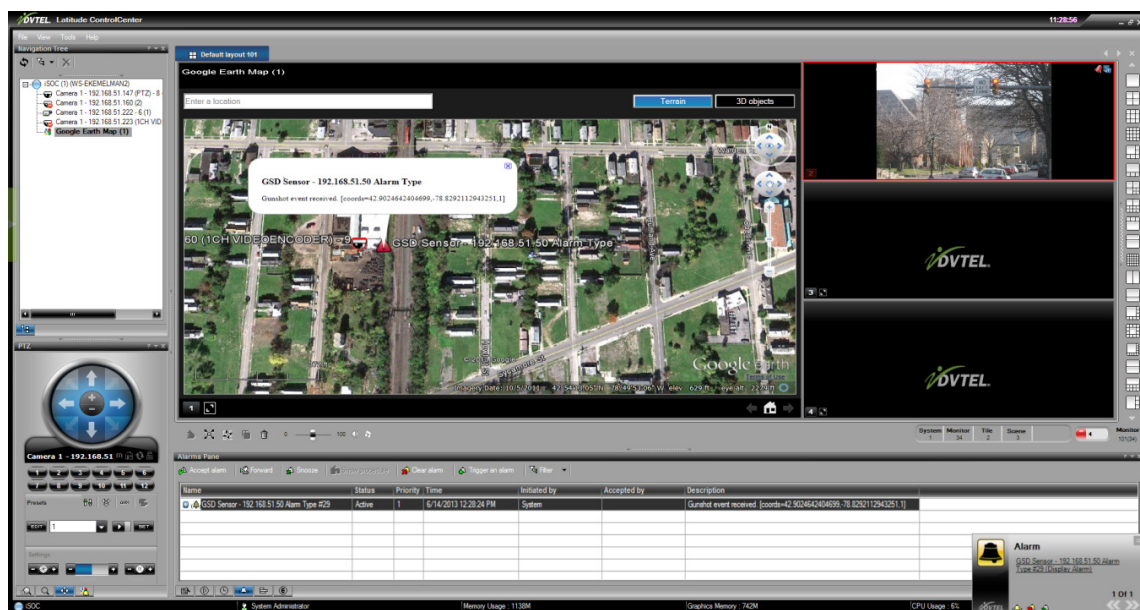
The DVTEL Safety Dynamics module integrates Safety Dynamics's gunshot detection system with DVTEL's Latitude NVMS. The integration presents GIS coordinates and bookmarks recorded video in Latitude's Control Center when a gunshot event occurs.

Safety Dynamics's SENTRI technology recognizes gunshots and explosions and sends GIS coordinate details which can be used to locate the source of the event. With the DVTEL Safety Dynamics integration module, event notifications are sent to Latitude providing operators with enhanced situational awareness of gunfire incidents.

Using AdminCenter inside of Latitude, the operator can locate cameras on a Google Earth map so that when a gunshot alarm occurs, the operator sees the exact location of the gunfire as well as nearby cameras. This gives the operator the ability to closely monitor and manage the incident. The system can also be configured in such a way that it automatically records video upon a gunshot alarm and sends an alert by email to key personnel.

From ControlCenter, operators can view and react to gunshot detection events. The gunshot's location will be marked on a Google Earth map, and a PTZ camera associated to the originating detection sensor will be automatically directed to the incident location and displayed to the operator.

Operators can also monitor the current connection status of Latitude with the Safety Dynamics system and its sensors, and setup alarms or supported actions to be performed when status changes.



# DVTEL Safety Dynamics Integration

## Integration features

- Safety Dynamics's gunshot detection events are handled inside of Latitude NVMS.
- Users can configure handling of gunshot detection events in Latitude as follows:
  - Treat as a Latitude alarm
  - Treat as a Latitude event
  - Both trigger an alarm and dispatch an event
  - Ignore the gunshot detection event
- Users can configure actions such as "Start recording", "Set recording quality" etc., when an alarm or event occurs
- Gunshot detection sensors will be automatically populated as entities in the Latitude tree.
- Operators can associate Latitude cameras to gunshot detection sensors.
- Gunshot incident locations are indicated as placemarks on a Google Earth map when an alarm is triggered.
- A ControlCenter "zoom-on-alarm" plug-in can be used to allow or prevent the globe from centering on gunshot incident placemarks upon triggered alarms.
- Double-clicking incident placemarks on the Google Earth map will display incident details: Gunshot event type and its coordinates.
- Cameras associated to the gunshot sensors will pop-up on an armed ControlCenter tile upon gunshot detection alarms.
- PTZ cameras will automatically point to the incident upon a gunshot detection alarm (either by an integration module "Go to Preset" command or "Go to absolute location" command for supporting cameras)
- Listening to gunshot detection events from the Safety Dynamics system can be enabled/disabled by starting/stopping a configured connection within Admin Center.

For additional information, please e-mail our presales team at [presales@dvtel.com](mailto:presales@dvtel.com) or visit our website at [www.dvtel.com](http://www.dvtel.com).

AIC-SafetyDynamics  
July 2013

**dvtel** Now you can.

VIDEO INNOVATION TO SECURE YOUR BUSINESS