

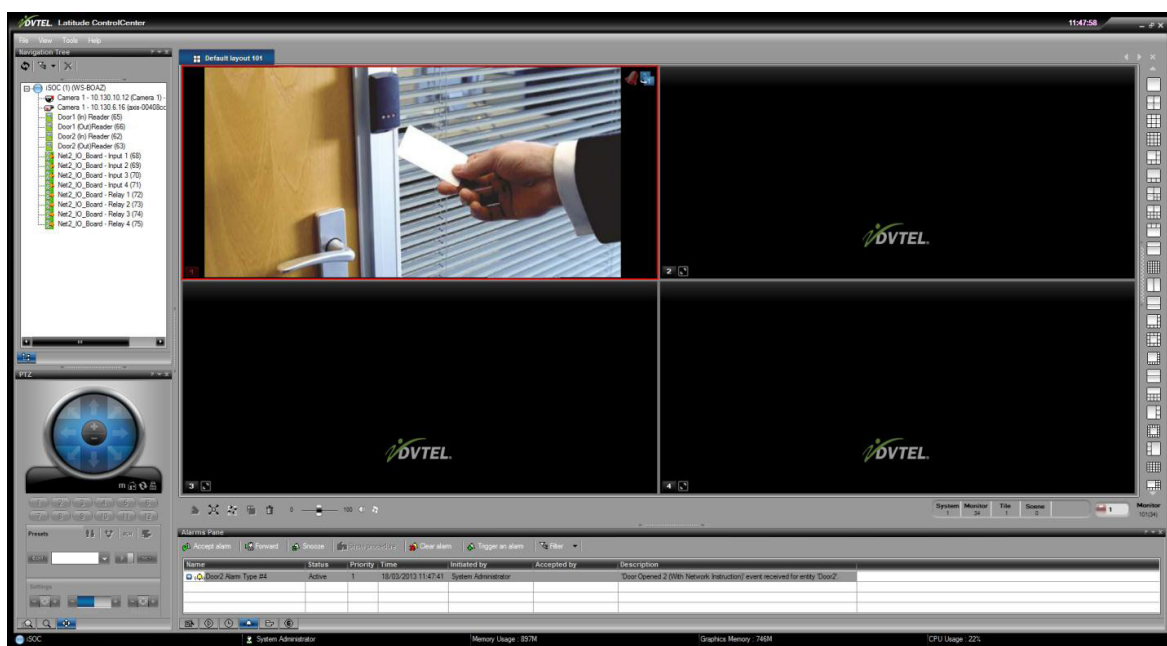
## DVTEL Paxton Integration Applications & Integration Center

The DVTEL-Paxton module integrates DVTEL's Video Management Systems (VMS) - Latitude, Horizon, and Meridian - with Paxton's Net2 access control system. The integration provides the means for handling targeted access control events generated by Paxton Net2 within the VMS.

Net2 is a user-friendly and flexible networked access control system, designed to make the management of any building simple. Easy to use and with excellent features, Net2 access control moves beyond the basics of managing the flow of people around a building, offering benefits like building control and system integration. Net2 is an efficient solution for businesses looking for complete security. It's ideal for smaller sites, with moderate access requirements, as well as larger companies looking to expand in the future.

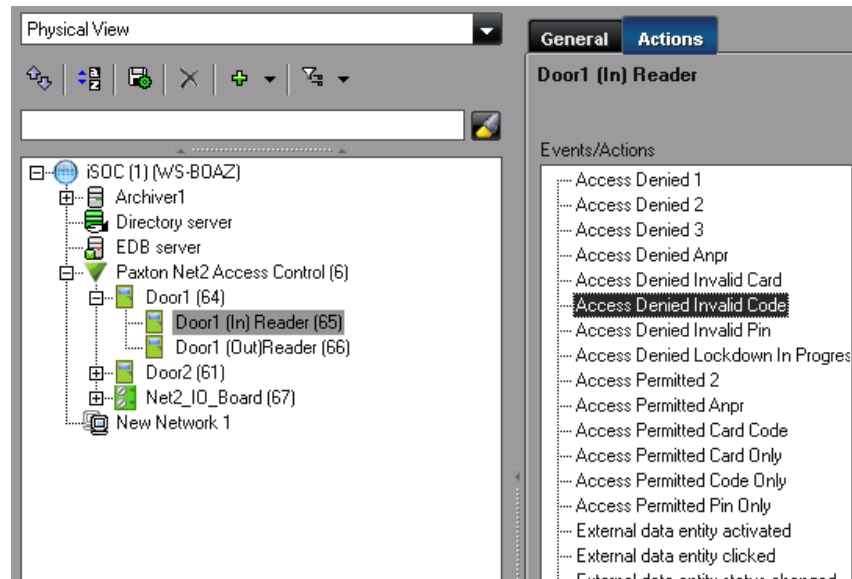
With the DVTEL-Paxton integration module, Net2 entities such as Doors and Readers reside on ControlCenter's navigation tree and can be either double-clicked or drag-and-dropped to an available tile. Each access control entity is associated with a camera. Upon event, an alarm is received for a specific access control entity, and a recording bookmark is created for the associated Latitude camera scene. The linked camera will show up in ControlCenter and will start recording based on the pre-alarm and post-alarm configuration.

The integration provides the status of the access control entities, indicating if each entity is accessible or not.



# DVTEL Paxton Integration

Using Latitude's AdminCenter or a standalone admin client, the user can view access control entities on the VMS trees and configure appropriate actions to be performed upon each incoming access control event.



## Integration features

- Paxton's Net2 access control system events are handled within the VMS.
- Users can configure handling the different access control event types such as Door Forced, Access Denied, Door Bell Pressed, ACU Tamper, etc.
- Latitude users can configure actions such as "Start recording", "Set recording quality" etc., to be executed upon an alarm or event.
- The Latitude alarm types associated to Net2 entities may be added to HTML Maps, so when these alarms are triggered in Latitude, the user will see a visual indication of the alarm location on the map.
- Camera(s) associated to access control alarm types will pop-up on an armed ControlCenter tile upon triggered alarms.
- Operative status of each Paxton component (functioning / malfunctioning) is graphically represented in the VMS trees.
- The integration supports failover of any Latitude server.

For additional information, please e-mail our presales team at [presales@dvtel.com](mailto:presales@dvtel.com) or visit our website at [www.dvtel.com](http://www.dvtel.com).

AIC-Paxton  
January, 2015

**dvtel** Now you can.

VIDEO INNOVATION TO SECURE YOUR BUSINESS