

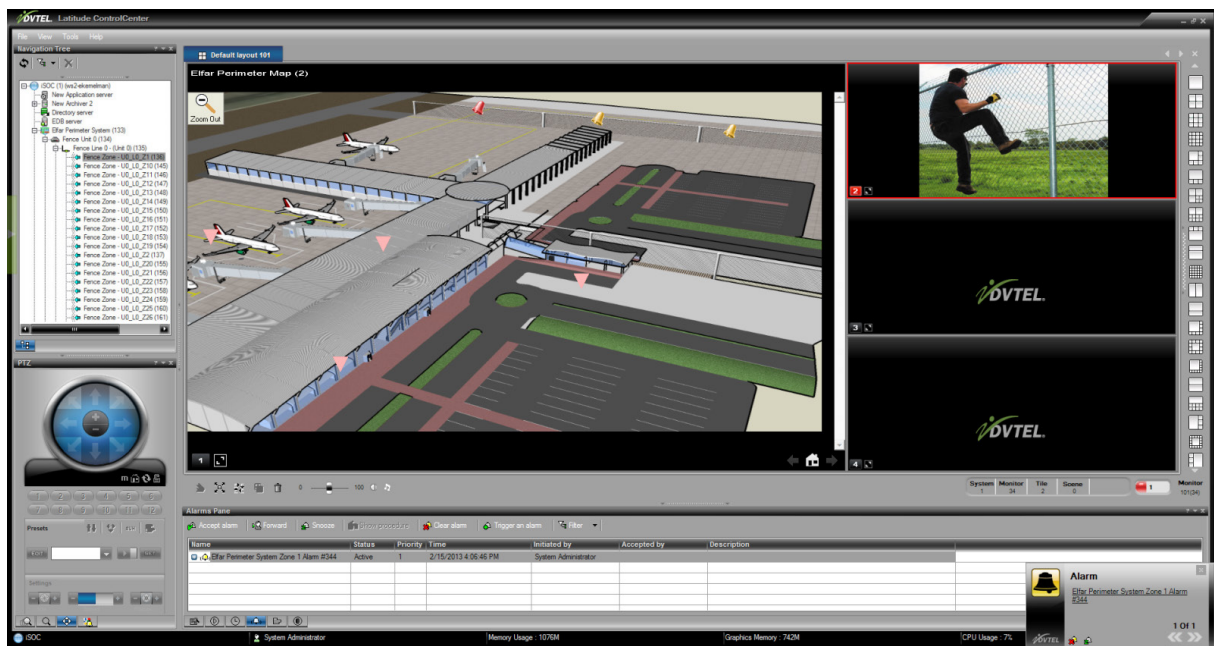
DVTEL Elfar Integration Applications & Integration Center

The DVTEL-Elfar module integrates DVTEL's Latitude NVMS with Elfar's perimeter solution. The integration provides the means for handling targeted perimeter events generated by Elfar within Latitude.

The Elfar perimeter solution, a new generation security system, transforms any existing type of fence into an electronic barrier with the best detection zone resolution of approximately 10 meters. Vibration sensors and electronic controllers are installed onto existing infrastructures providing the most comprehensive intrusion detection system available.

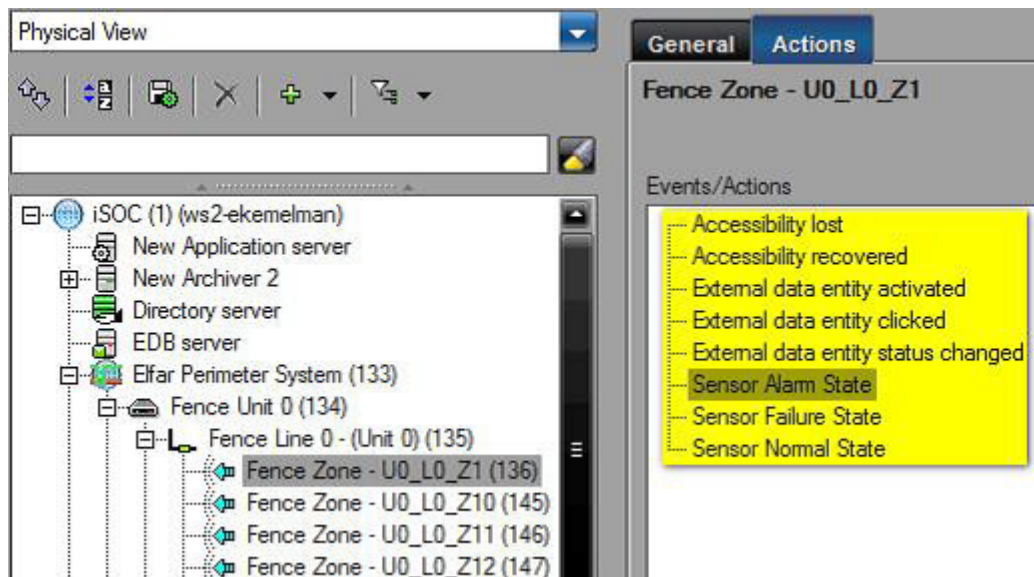
With the DVTEL Elfar integration module, Elfar zones reside on Latitude's ControlCenter navigation tree and can be either double-clicked or drag-and-dropped to an available tile. Each zone is associated with a Latitude camera in Admin Center. Upon event, an alarm is received for a specific zone, and a recording bookmark is created for the associated Latitude camera scene. The linked camera will show up in Control Center and will start recording based on the pre-alarm and post-alarm configuration.

The integration provides the status of Elfar controllers and zones, indicating if each controller/zone is up or down.



DVTEL Eifar Integration

Using AdminCenter, the user can view perimeter entities on the Latitude trees and configure appropriate actions to be performed upon each incoming perimeter event.



Integration features

- Eifar's perimeter system events are handled within Latitude
- Users can configure handling the different perimeter event types such as Fence Zone Alarm, Input Event (opened or closed), Fence Unit Tamper, etc.
- Users can configure actions such as "Start recording", "Set recording quality" etc., to be executed upon an alarm or event.
- The Latitude alarm types associated to Eifar entities may be added to HTML Maps, so when these alarms are triggered in Latitude, the user will see a visual indication of the alarm location on the map.
- Camera(s) associated to perimeter alarm types will pop-up on an armed ControlCenter tile upon triggered alarms.
- Operative status of each Eifar component (functioning / malfunctioning) is graphically presented in Latitude trees.
- The integration supports failover of any Latitude server – Directory, Application Server and Archiver.

For additional information, please e-mail our presales team at presales@dvtel.com or visit our website at www.dvtel.com.

AIC-Eifar
August, 2013

dvtel Now you can.

VIDEO INNOVATION TO SECURE YOUR BUSINESS